

dh4-15 VESA spacer bolt set

Assembly instructions

The VESA spacer bolts are compatible with all **75x75, 100x100** and **200x200mm** VESA monitors. The spacer bolts create a distance of 15mm to your monitor.

These bolts allow the use of VESA holes that are otherwise difficult or impossible to access. It also creates a **distance** of **15mm** from your monitor.

With these spacer bolts, you can easily attach your monitor of various brands to a monitor arm with a VESA hole pattern (**75 x 75mm, 100x100mm, 200x200mm**). Use the screws supplied for this.

WARNING

To minimize the risk of injury, it is important to read all instructions carefully before installation. We accept no liability for personal injury or damage to property caused by improper use of this product. It is also essential to observe the technical specifications of the product.

1. Read all instructions carefully.
2. Incorrect installation can lead to damage or serious injury. Make sure that the product and the monitor are securely mounted before using it. 3.
3. Make sure that the bracket to which the product is attached can easily support the total weight of the monitor, computer and adapter.

Please read these instructions carefully and keep them for future reference. If you pass the product on to third parties, these instructions should always be included. Failure to follow these instructions may result in injury or damage to





persons or the product, for which we cannot accept any liability.

IMPORTANT - KEEP FOR FUTURE REFERENCE.

- This product should always be used in accordance with the specified safety instructions.
- Do not install your VESA adapter in combination with the monitor in places where there are people below.
- Do not exceed the **maximum weight** of the compatible monitor models of **9kg**, otherwise serious injury or damage to property may occur.
- Observe the maximum ambient temperature of 80°C when using the product.
- Do not mount the VESA adapter near a heat source or in direct sunlight, as this could heat up the adapter.
- Check whether your mounting point (e.g. monitor arm) can withstand the weight of the monitor with VESA adapter.
- The product is designed exclusively for mounting with a hole pattern of 75x75, 100x100, 200x200 mm.
- After installing the VESA adapter, the position of the monitor must be readjusted to ensure correct ergonomics.

CAUTION

Make sure that the device is switched off and disconnected from the power supply before installation to avoid possible injury or damage.

Check the product carefully for possible transport damage and for the absence of accessories, such as screws, which should be included in the scope of delivery.

CAUTION

Make sure that packaging materials and the small screws and small parts they contain are inaccessible to children in order to minimize the risk of suffocation and other risks.

2.1 Maintenance

- It is recommended to check every three months that all screws are still tight. Also regularly check the condition of all components of the product.
- Store the product in a cool and safe place, ideally at a maximum storage temperature of 40°C. To ensure additional safety, the product should be stored away from children and preferably in its original packaging.
- Avoid any vibrations and shocks so as not to impair the service life and functionality of the product.

2.2 Cleaning

- No corrosive or hot cleaning agents should be used to clean the product. Wire

brushes, metal or other sharp materials are also unsuitable for cleaning and should not be used.

- The use of a soft, damp cloth is recommended for gentle and effective cleaning. For the disposal of this product, we recommend that you contact the relevant local authorities or waste disposal services. They can provide you with detailed information on available disposal options and recycling centers in your area.

3idee S.à r.l.
19 Rue de Bitbourg
L-1273 Luxembourg
Luxembourg

E-mail: info@3idee.eu

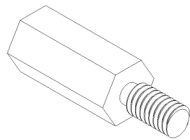
If you need help with your article, we are here for you. We also appreciate any kind of feedback.

<https://help.3idee.eu/de/kontakt>

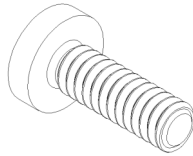
Technical Specifications

- **Maximum monitor weight:** 12 kg / 26.5 lbs
- **VESA standard compatibility:** 75x75 mm, 100x100 mm, 200x200 mm
- **Material:** steel
- **Pivot angle:** 90°
- **Maximum operating temperature:** 60°C / 140°F
- **Maximum ambient temperature:** 60°C / 140°F

Scope of Delivery Accessories



4x Spacer bolt SW7x15mm



4x M4x10 screw with cross slot

⚠ NOTE: Please check before assembly whether all accessory parts are complete. If anything is missing, please contact our customer service immediately via email or phone. We are happy to assist you.

Horizontal / Vertical Alignment

Not all VESA adapters and monitors are suitable for vertical alignment. (upright)

This is due to the geometry of the adapter / monitor, which in some cases cannot be achieved in any other way.

We would like to point out that this information should not be disregarded under any circumstances, as the adapter will very quickly reach its durability limit if it is not mounted as specified.

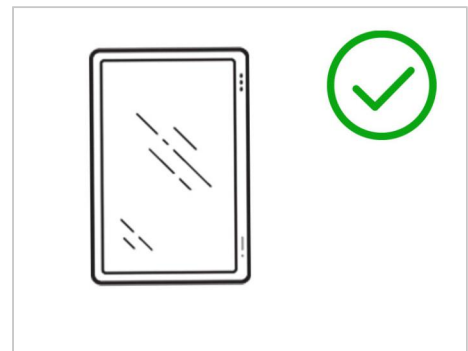
We always try to develop monitors for vertical (upright) mounting.

The standard orientation of a monitor is horizontal.

**Horizontal
Mounting: YES**



**Vertical
Mounting: YES**



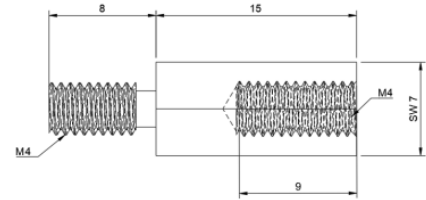
General Dimensions

Distance: 15mm

Width across flats: SW7

External thread: M4x8

Internal thread: M4x9



Assembly Instruction

Step 1

Screw the spacer bolts to your monitor as shown. (Figure 1)

Use pliers or a 7mm box wrench to help.

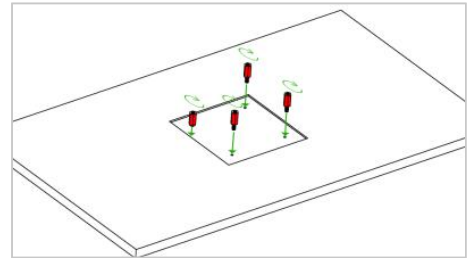


Figure 1

Step 2

Make sure that all spacer bolts are properly tightened. (Figure 2)

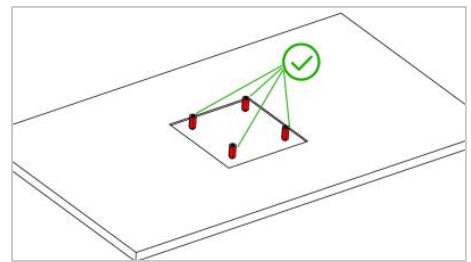


Figure 2

Step 3

⚠ NOTE: If the instructions in this step are not suitable for your device, please follow the mounting guidelines of the manufacturer of your monitor arm or swivel arm to mount the monitor to the wall or swivel arm.

We recommend a **second person** for this step.

Now lift the monitor and hold it against your monitor mount. Attach your monitor and the spacer bolts with the 4 M4x8 screws provided. (Figure 3)

It is best to fasten 2 screws diagonally first so that the monitor can no longer fall down and you can fasten the remaining screws easily.

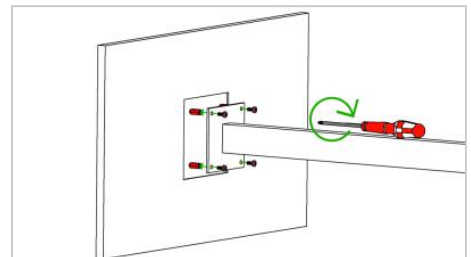


Figure 3

Step 4

Please make sure that all 4 screws are tight. (Figure 4)

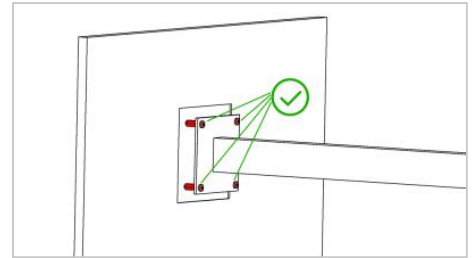


Figure 4